



# Agroforestry Calendar Belize 2012

## Trees: the value added of your livestock farm





# January

## Silvicultural management of the trees

The pruning of timber trees, that is, the correct trimming of a tree or shrub, stimulates straight stems, prevents defects in the wood and increases the value of sale. It is recommended to carry out this practice during the early growth of the trees, when the plants tend to fork or to produce too many branches. When the pruning is done in this stage, the recovery of the tree is much faster.

Sunday	Monday	Tuesday	Wednesday	Thursday	Friday	Saturday
☽ 1	2	3	4	5	6	7
8	● 9	10	11	12	13	14
15	☾ 16	17	18	19	20	21
22	○ 23	24	25	26	27	28
29	30	☽ 31	Notes			
<hr/> <hr/> <hr/>						





# February

## Silvicultural management of the trees

When sick, bent or forked trees are observed or that are too close altogether (when the crowns intertwine) it is recommended to carry out a thinning, that is to say, to remove these individuals in order to leave the best trees for the final harvest. The elimination of these trees can generate direct benefits, such as firewood and even some lumber in some occasions.

Sunday	Monday	Tuesday	Wednesday	Thursday	Friday	Saturday
			1	2	3	4
5	6	● 7	8	9	10	11
12	13	☾ 14	15	16	17	18
19	20	○ 21	22	23	24	25
26	27	28	29	Notes _____ _____ _____		





# March

## Silvicultural management of the trees

The selection of seed trees guarantees the continued presence of commercial timber trees with the best potential for the benefit of your farm and your family. Prefer the native trees, of fast growth and of high commercial value.

Sunday	Monday	Tuesday	Wednesday	Thursday	Friday	Saturday
Notes				☾ 1	2	3
4	5	6	7	● 8	9	10
11	12	13	14	☾ 15	16	17
18	19	20	21	○ 22	23	24
25	26	27	28	29	☾ 30	31



# April

## Multiple benefits of the trees

The trees in pasture are source of food for the animal consumption, whether be, for its fruits or for its foliage. For example, the animals can feed on the fruits of the guanacaste, or from the leaves of the madrecaao, which is commonly used as live fence.

Sunday	Monday	Tuesday	Wednesday	Thursday	Friday	Saturday
1	2	3	4	5	● 6	7
8	9	10	11	12	☾ 13	14
15	16	17	18	19	20	○ 21
22	23	24	25	26	27	28
☽ 29	30	Notes				
<hr/> <hr/> <hr/>						





# May

## Multiple benefits of the trees

The shade provided by trees reduces the heat stress of the animal, even achieving an increment of 15% in the milk production and a 20% in the meat production, by the weight gain of the animal.

Sources:  
Betancourt, K; Ibrahim, M; Harvey, C; Vargas, B. 2003. **Efecto de la cobertura arbórea sobre el comportamiento animal en fincas ganaderas de doble propósito en Matiguás, Matagalpa, Nicaragua.** Agroforestería en las Américas 10(39-40): 4-51.

Souza de Abreu, MH. 2002. **Contribution of Trees to the Control of Heat Stress in Dairy Cows and the Financial Viability of Livestock Farms in Humid Tropics.** PhD. Thesis. Turrialba, Costa Rica, CATIE. p. irr.

Restrepo, C; Ibrahim, M; Harvey, C; Harmand, M; Morales, J. 2004. **Relaciones entre la cobertura arbórea en potreros y la producción bovina en fincas ganaderas en trópico seco en Cañas, Costa Rica.** Agroforestería en las Américas N° 41-42:29-36.

Sunday	Monday	Tuesday	Wednesday	Thursday	Friday	Saturday
		1	2	3	4	5
● 6	7	8	9	10	11	☾ 12
13	14	15	16	17	18	19
○ 20	21	22	23	24	25	26
27	☽ 28	29	30	31	Notes _____ _____ _____	





# June

## Multiple benefits of the trees

The harvesting of scattered trees in pasture improves the profitability of the farm, for example, additional economic benefits are received upon selling lumber or firewood. It also helps to avoid unnecessary expenses when these products are used in the same farm, for example harvesting the timber to repair the yard (corral) or the main gate in the farm.

Sunday	Monday	Tuesday	Wednesday	Thursday	Friday	Saturday
Notes					1	2
3	● 4	5	6	7	8	9
10	☾ 11	12	13	14	15	16
17	18	○ 19	20	21	22	23
24	25	26	☽ 27	28	29	30





# July

## Management of the animal load

During the rainy season, the pasture recovers and the seeds scattered by the trees germinate. Therefore, it is necessary to take more care since the tender seedlings on the ground are a temptation for the animals.

Sunday	Monday	Tuesday	Wednesday	Thursday	Friday	Saturday
1	2	● 3	4	5	6	7
8	9	10	☾ 11	12	13	14
15	16	17	18	○ 19	20	21
22	23	24	25	☽ 26	27	28
29	30	31	Notes			
			_____			
			_____			
			_____			





# August

## Management of the animal load

The animals in my farm are kept isolated from the areas with abundant natural regeneration. Through a proper subdivision of the paddocks, the animals are easily retained in the farm and moved to new areas with pasture according to its capacity.

Sunday	Monday	Tuesday	Wednesday	Thursday	Friday	Saturday	
			1	●	2	3	4
5	6	7	8	☾	9	10	11
12	13	14	15	16	○	17	18
19	20	21	22	23	☽	24	25
26	27	28	29	30	●	31	





# September

## Management of the animal load

This is a good time to sell your animals, they have gained the adequate weight and by reducing the quantity of animals, the pressure on the pasture and the need for more land to plant grass is reduced.

Sunday	Monday	Tuesday	Wednesday	Thursday	Friday	Saturday
Notes						1
2	3	4	5	6	7	8
9	10	11	12	13	14	15
16	17	18	19	20	21	22
23	24	25	26	27	28	29
30						





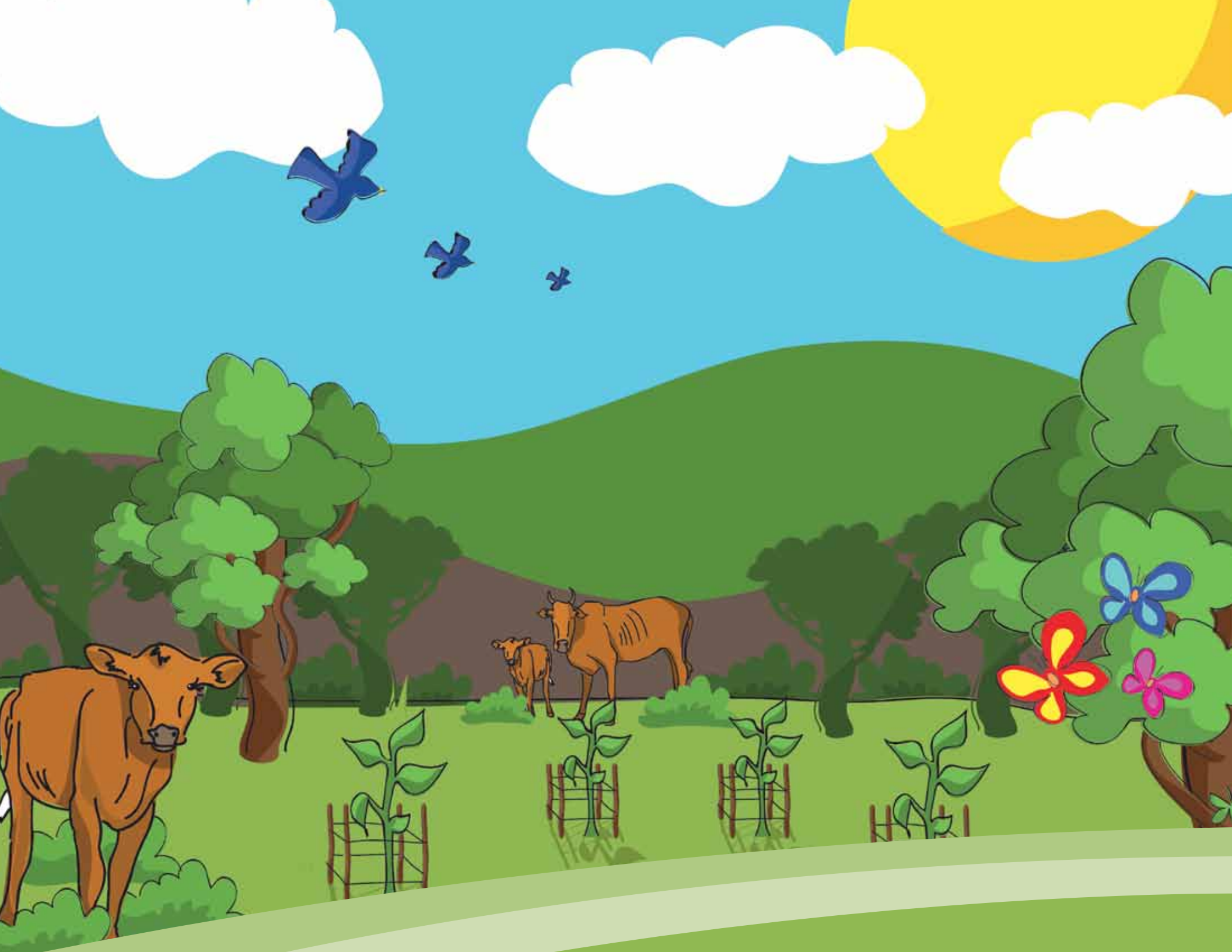
# October

## Management of natural regeneration

The time has come to carry out selective chopping; this allows you to leave standing all small plants with commercial value. It is important that you take the time to explain clearly to workers on the small plants which are to be retained. A good practice is to tour around the farm to mark out all those small plants that should be protected before the start of the chopping.

Sunday	Monday	Tuesday	Wednesday	Thursday	Friday	Saturday
	1	2	3	4	5	6
7	8	9	10	11	12	13
14	15	16	17	18	19	20
21	22	23	24	25	26	27
28	29	30	31	Notes		
				_____		
				_____		
				_____		





# November

## Management of natural regeneration

The small plants with commercial value are protected with protection barriers from the defoliation or premature loss of leaves and from the trampling of the animals. The protection barriers are an investment that will protect many small plants for a long time, which will be reflected on the multiple benefits that are generated by the trees in the farm.

Sunday	Monday	Tuesday	Wednesday	Thursday	Friday	Saturday
Notes				1	2	3
4	5	6	7	8 ☾	9	10
11	12	13 ○	14	15	16	17
18	19 ☽	20	21	22	23	24
25	26	27 ●	28	29	30	





# December

## Management of natural regeneration

The weed control around the small plants helps its growth. The elimination of grass or any other plant without commercial value reduces the competition for sunlight, water and nutrients origination from the soil.

Sunday	Monday	Tuesday	Wednesday	Thursday	Friday	Saturday
Notes						1
2	3	4	5	☾ 6	7	8
9	10	11	12	☉ 13	14	15
16	17	18	19	☽ 20	21	22
23	24	25	26	27	● 28	29
30	31					



Let's work together to ensure the sustainable management of **timber trees** in our farms.

Our extension personnel are here to **help you**.



For further information, feel free to contact our offices at the following locations:

**Agriculture Department & Finnfor**  
Central Farm  
Mile 65, Western Highway  
Tel: 804-2079 (MAF) or 804-4680 (Finnfor)

**Forest Department**  
Forest Drive, Belmopan City  
Tel. 802-1524/2079